



BAR-H  
— LAND & CATTLE CO. —

*Annual*  
**ANGUS**  
*Bull & Female*  
**SALE**

BRED FOR PERFORMANCE | EVALUATED BY COMPARISON



**THURSDAY, MARCH 9, 2023**

At The Ranch Headquarters | Langenburg, SK | 1:00 PM CST



# Welcome...



**Robin, Michelle & John Hogberg**

**Langenburg, SK S0A 2A0**

**Ph: 306-743-2840**

**Robin Cell: 306-743-7490**

**Michelle Cell: 306-496-7744**

**John's Cell: 306-496-7696**

**Email: [rthogberg@sasktel.net](mailto:rthogberg@sasktel.net)**

On behalf of everyone here at our operation I would like to welcome you and we thank you for taking the time to look over our offering. Every year there are many options when it comes to selecting quality breeding stock for the upcoming year and the fact that you are taking the time to read this is truly humbling.

We have been in the seed stock business for over 50 years and have seen a lot of trends and many ups and downs in agriculture. Purchasing high quality breeding stock has always been a wise investment regardless of the times.

We have always felt that it was important to own the very best herd bulls that we could afford and over the course of 5 decades that is exactly what we have done. I think it is something inside of me, pride of ownership, creating your very own breeding program and owning it. To know the cows behind that bull, to have him walk your pasture and see him perform, everything from soundness to temperament to having his first daughters come into production. It's a never ending journey that we truly enjoy.

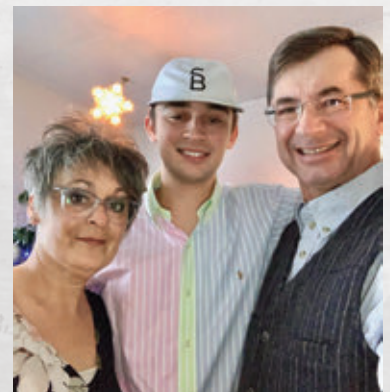
Our management practices are very idealistic. We have made a conscious decision not to creep feed our calves on the cows at any point. There are lots of opinions regarding this and I would agree that this decision has cost our operation a lot of money at times. But I truly believe that by not creep feeding we know exactly how a cow is performing maternally and the true genetic performance of the calf is exposed in all his potential. The result of this management has identified and separated individual cows and herd bulls once their daughters get into production. It puts all the onus on the genetics and I feel that our EPD's read relatively accurate.

Our program also strongly believes in all the current tools available for the producer in order to improve. Performance testing, submitting data, EPD's, Genomics. We believe that we can't improve if we don't measure it. We are also a strong believer in the show ring and exhibiting cattle at livestock shows. We believe that it is the best tool available for evaluating our own individuals with regards to body type and structure. We like our cattle to have a certain look. Fresh, attractive with lots of volume. At home they all can look great, but not until I compare what I have to other programs do I truly get an honest read as to where we are, and what we need to improve on. So very important.

In closing all of us would like to have you for lunch at noon prior to the sale. We invite you to go through our offering and if you have any questions we would be more than happy to visit with you regarding your needs. Remember all the cattle will be videoed for your appraisal and can be viewed at [www.cattlevids.ca](http://www.cattlevids.ca) and the sale will be broadcast live on DLMS.

On behalf of us all,

*Robin*



# Annual ANGUS Bull & Female SALE

**THURSDAY, MAR 9, 2023**

**At The Ranch Headquarters  
Langenburg, SK | 1:00 PM**

*At the Farm ~ 40 miles east of Yorkton, 9 miles south of  
Langenburg and 3 miles east of the Bar-H sign*

## SALE STAFF

**T Bar C Cattle Co. Ltd.**

**Auctioneer:** Chris Poley 306-220-5006

## RINGSIDE

Shane Michelson 403-363-9973

Ben Wright 519-374-3335

Levi Rimke 204-851-4515

## ACCOMMODATIONS

Canalta Inn, Esterhazy, 306-745-3644

Langenburg Inn, Langenburg 306-743-2638

Russell Inn, Russell Inn 204-773-2186

Canalta Inn, Moosomin, SK 306-435-3034

## INSURANCE

Alameda Agencies, Bonnie Thompson 306-489-2258

## HERD HEALTH

Valley Flats Veterinary Services

Dr. Rebecca Girven DVM 306-435-3979

**PHOTOGRAPHY:** Robin & Michelle Hogberg

*From the desk at  
T Bar*

Welcome to the Bar-H Land and Cattle Co. annual Bull and Female Sale, Thursday March 9, 2023 at the ranch headquarters, Langenburg, Saskatchewan. Based on livestock knowledge and customer requirements, the Hogberg family has been breeding and marketing seedstock for nearly a half century. They pride themselves in producing "real cattle for real cattlemen."

Their 2023 lineup is both exciting and futuristic... bulls that will add value for years forward in the feeder pens of the industry and replacement pastures out of their daughters. In the offering you will find breeder bulls, power bulls for your cows and bulls for your heifer pens. You must appreciate the quality and uniformity of each sire group, rich in strong phenotypes and true optimal birth weights. Most all the bulls will turn two in April... that in itself relates to the high fertility factor. There are no creep feeders at Bar-H, the bulls are summer run in big grass paddocks and only supplemented as sale time nears.... they manage their cow herd with the same principles as those of their many repeat customers.

The heifers on offer are yearling sisters to the bulls selling. In the group you will find several heifers that will be show prospects, ideal for juniors of any age. One can be assured that many of the females will make the front pastures in their new homes and become predictable, profitable brood matrons. We must always remember that the Angus cow is "Queen of the Pasture!"

Stop by the ranch anytime prior the sale and get Robin to give you a tour of the offering and preview the mothers or just give him a call... he loves to talk Angus with straight answers. March 9th is a day that should be penned on your calendar... a day of opportunity, plan to be with us.

If we may be of assistance, prior to or sale day, feel free to contact any of the T Bar Team or myself, we will help you in a professional manner.

*Chris Poley*



## SALE MANGEMENT

T Bar C Cattle Co. Ltd.  
Box 2330, Warman, SK S0K 4S0  
Ph: 306-933-4200  
info@tbarc.com  
www.buyagro.com

## WATCH & BID ONLINE

Internet Bidding Available

**DLMS**

[www.dlms.ca](http://www.dlms.ca)

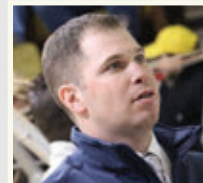
For more information call DLMS:  
Mark Shologan 780.699.5082 or  
DLMS Purebred Team 780.991.3025



**Chris Poley**  
306-220-5006



**Shane Michelson**  
403-363-9973



**Ben Wright**  
519-374-3335

**View the catalogue online [www.BuyAgro.com](http://www.BuyAgro.com)**





# Driving the science of better breeding

There's little room for error in the cattle business. Producers need the most advanced information to make smart selection decisions, and Angus Genetics Inc. (AGI) provides it through genomic-enhanced expected progeny differences (GE-EPDs).

GE-EPDs have become the industry standard for herd improvement, building on decades of science-backed genetic evaluation tools originated and maintained through the American Angus Association\*, home to the largest and ever-growing single-breed beef cattle database.

EPDs that traditionally contained all pedigree, performance and progeny information now also include results from available genomic, or DNA, tests. Breeders who use genomic technology give buyers access to AGI-generated GE-EPDs that provide:

Increased predictability and decreased risk for young and unproven animals due to enhanced accuracy of EPDs

Better characterization of genetics for difficult-to-measure performance traits (such as carcass traits, maternal traits and feed efficiency)

The ability to make more rapid progress for traits that are important to you, due to:

- more accurate selection
- easier identification of genetic outliers
- the ability to propagate young animals with confidence earlier in their lives

In fact, GE-EPDs on unproven animals have the same amount of accuracy as if they had recorded 10-36 calves, depending on the trait. That's valuable insight, offered regularly through the breed's weekly national cattle evaluation.

Trait	Progeny Equivalent	Trait	Progeny Equivalent
Calving Ease Direct	26	Heifer Pregnancy	17
Birth Weight	23	Calving Ease Maternal	20
Weaning Weight	27	Milk	36
Yearling Weight	23	Mature Weight	15
Dry Matter Intake	12	Mature Height	9
Scrotal Circumference	15	Carcass Weight	15
Docility	12	Yearling Height	17
Claw Set	10	Carcass Marbling	11
Foot Angle	10	Carcass Ribeye	17
		Carcass Fat	14

## How do you know if EPDs are genomic-enhanced?

Ask your breeder, refer to the registration paper, or look for the AGI GE-EPD logo, Angus GS™ powered by partner Neogen GeneSeek or the HD50K by partner Zoetis. These images indicate animals for which low-density or high-density genomic testing has been conducted and incorporated by AGI into GE-EPDs



[www.angus.org](http://www.angus.org)





**Bar-H Mindbender 141D**

**A** BAR-H *Mindbender* 141D  
**RS** 1950055 AHPC 141D 09/05/2016

GDAR GAME DAY 449  
**S SUMMIT 956 1834453**  
S PRIDE ANNA 709  
  
S A V 004 PREDOMINANT 4438  
**HF TIBBIE 93U 1447474**  
HF TIBBIE 35K

BOYD NEW DAY 8005  
G D A R MISS WIX 474  
R&S EXPEDITION 1404  
S PRIDE ANNA 567  
  
S A V 8180 TRAVELER 004  
S A V EMBLYNETTE 1182  
WHITESTONE WIDESPREAD MB  
HF TIBBIE 49C

CE	BW	WW	YW	MILK	SC	CW	MARB	REA	FAT	MCE
8.0	1.6	63	113	33	1.20	38	0.37	0.22	0.091	6.0

Mindbender was the very popular and high selling bull in 2018 bringing \$38,000.00 for a full 1/2 of the bull, selling to Spring Creek Simmentals, the Brian McCarthy family. Mindbender was a planned mating, combining superior female maker, S Summit and power Angus cow, HF Tibbie 93U. To this point he has crossed all boxes as a genuine breed improver. He will keep birth weights in check, add performance at weaning and yearling and sire both sexes of high quality. He stands on a great set of feet and is very low maintenance. We believe his greatest contribution will be that of his females. They are stouter made, soft in kind and are genuinely milky with great udders and teat scores.

**B** Hoffman *Sensation* 803  
**RS** 2175605 IMP 8803F 01/14/2018

S A V REGISTRY 2831  
**S A V SENSATION 5615 AAA18258149**  
S A V BLACKCAP MAY 4136  
  
S A V BRILLIANCE 8077  
**C A BRILL MISS EVERGREEN 101 AAA16984395**  
C A NW MISS EVERGREEN 813

RITO 707 OF IDEAL 3407 7075  
S A V MADAME PRIDE 0075  
S A V 8180 TRAVELER 004  
S A V MAY 2397  
  
S A V BISMARCK 5682  
S A V BLACKCAP MAY 5270  
S A V NET WORTH 4200  
CAR DON MISS EVERGREEN B601

CE	BW	WW	YW	MILK	SC	CW	MARB	REA	FAT	MCE
2.0	2.4	60	108	25	0.35	43	0.06	0.63	-0.039	11.0

Sensation was our pick of the Angus bulls at Hoffman Ranches sale of 2019. We believe he is S A V Sensations finest son. He is overpowering in his overall mass and capacity consistently siring cattle that have extra depth of body, extra bone and extra hair, traits that feedlots look for and we believe Angus cattle have been lacking. He stands on an extremely large foot and is very accurately constructed. His overall profile and balance seeps with quality as he continues to improve cows that he is mated with. His first daughters have calved out with lots of volume and possessing near ideal teat scores.



**Hoffman Sensation 803**



**Bar E L Royal Mint 88G**

**C**  
**RS**

BAR-E-L *Royal Mint* 88G

2121974 YHB 88G 20/02/2019

CONNEALY CAPITALIST 028  
**LD CAPITALIST 316**  
DIXIE ERICA 2053

REFLECTION 607A  
**HF EVENING TINGE 38C**  
HF EVENING TINGE 118Z

S A V FINAL ANSWER 0035  
PRIDES PITA OF CONANGA 8821  
C A FUTURE DIRECTION 5321  
LD DIXIE ERICA OAR 0853

MCATL REFLECTION 120-577  
SOO LINE DANA 9028  
HF TIGER 5T  
HF EVENING TINGE 55N

CE	BW	WW	YW	MILK	SC	CW	MARB	REA	FAT	MCE
8.0	2.0	70	123	24	1.27	60	0.81	4.54	0.029	6.0

With out question one of the very best sons of Capitalist 316. Was purchased as the high seller at \$27,500.00 in 2020 from the industries great Bar-E-L program. Comes from the power cow HF Evening Tinge 38C who is a legitimate front pasture doner cow. He calves easy with moderate birth weights. His sons excel in length of body, added frame, extra bone and more muscle. We are also looking at Royal Mint to improve the carcass quality of our herd, a very important trait moving forward.

Owned with Bar-E-L Angus

**D**  
**RS**

*S Intrinsic* 799

2122614 IMP 799E 15/03/2017

CONNEALY GREELEY  
**CONNEALY INTRINSIC US17888848**  
JAZZY OF CONANGA 4660 860C

CONNEALY FREIGHTLINER  
**S RITA 6341 US15732595**  
S RITA 4309

CONNEALY CONFIDENCE 0100  
PRECIOUS OF CONANGA 0484  
B C MARATHON 7022  
JAZE OF CONANGA 234

BON VIEW BANDO 598  
JOANA ERICA OF CONANGA  
SITZ ALLIANCE 6595  
PAWS UP 822 EMULATION EXT

CE	BW	WW	YW	MILK	SC	CW	MARB	REA	FAT	MCE
8.0	1.8	63	112	27	1.85	38	0.42	0.14	0.069	8.0

Intrinsic was obtained in the spring of 2018 from Nathan and Emily Spickler. With his first calf crop he was able to lower birth weight on every cow he was mated to which earned him a negative birth EPD. Even though his calves come small at birth they appear to grow and perform well following weaning. Intrinsic has a lot to offer our program, he is a complete outcross to most of our bloodlines, his scrotal size and EPD are in the top 1% of the breed, he stands on a very good foot and his temperament is second to none. Combining his balanced genetic profile along with his overall structural completeness makes him a very valuable breeding tool for the future. As a note, his full flush sisters are very good in every area of production. As of this spring his first daughters are calving and the udder quality is impeccable. His daughters calve out with very ideal udder and teat scores.



**S Intrinsic 799**





**S Open Country 454**

**E  
RS**

**S Open Country 454**

1850490 IMP 454B 16/03/2014

VERMILION XTRA X  
**HA OPEN COUNTRY 2047 US17343386**  
HA BEMINDFUL MAID 4205

SHIPWHEEL CHINOOK  
**S GLORIA 0406 US16661889**  
S GLORIA 858

VERMILION X FACTOR  
VERMILION MAMERE 5403  
H A IMAGE MAKER 0415  
HA BEMINDFUL MAID 2605  
H A IMAGE MAKER 0415  
APEX ERISKAY 5506  
S CHISUM 6175  
S GLORIA 222

CE	BW	WW	YW	MILK	SC	CW	MARB	REA	FAT	MCE
5.0	2.2	70	122	26	1.00	47	0.45	0.49	0.045	7.0

Open Country keeps adding value to his presence as each year goes by. His sons are easy to feed and sell because of their loose hide, large scrotal and soft middle. Open Country is an udder and teat improver and his daughters are making big bodied, roomy cows. He does all of the aforementioned along with keeping birth weight in check.

**F  
RS**

**BT Titan 0626**

1959670 IMP 0626D 18/02/2016

KOUPALS B&B EXTRA 0011  
**KOUPALS B&B TITAN 3013 US17608631**  
B&B BLACKCAP 0068

CONNEALY EARNAN 076E  
**BT ELBAR 313 US17686448**  
BT ELBAR OF KIN 521

KOUPALS B&B EXTRA 7080  
B&B BLKBD PROGRESS 5030  
KOUPALS B&B MARATHON 8031  
B&B BLACKCAP 8104  
CONNEALY CONSENSUS  
BRAZILA OF CONANGA 3991 839A  
CONNEALY IMPRESSION  
BT ELBAR OF KIN 159

CE	BW	WW	YW	MILK	SC	CW	MARB	REA	FAT	MCE
-16.0	7.0	80	132	19	0.72	43	0.34	0.69	0.000	2.0

Titan was a great find from Thompson Angus in North Dakota. Deep bodied, level hipped with added dimension is what you get when you use Titan. His feet are impeccable and because of his athleticism he covers a lot of ground in the breeding pasture. His sons will feature our spring bull sale and as well, his females are some of the real features here. By all accounts his daughters have improved udder attachments and the teat placement is ideal making them problem free.



**BT Titan 0626**

*lot*  
**22J**

# BAR-H SENSATION 22J

2233145 AHPC 22J 20-03-2021

S A V SENSATION 5615  
**HOFFMAN SENSATION 803**  
C A BRILL MISS EVERGREEN 101

S SUMMIT 956  
**BAR-H TIBBIE 87D**  
HF TIBBIE 93U

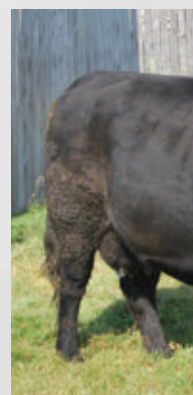
S A V REGISTRY 2831  
S A V BLACKCAP MAY 4136  
S A V BRILLIANCE 8077  
C A NW MISS EVERGREEN 813

GDAR GAME DAY 449  
S PRIDE ANNA 709  
S A V 004 PREDOMINANT 4438  
HF TIBBIE 35K

BW: 68 lbs. • ADJ WW: 770 lbs.

CE	BW	WW	YW	MILK	SC	CW	MARB	REA	FAT	MCE
8	0.3	58	103	35	0.54	43	-0.14	0.47	0.03	14

- Outstanding phenotype
- Rare to get this kind of look in a genuine calving ease bull -Dam is a flush sister to Bar-H Mindbender 141D
- This guy will be a maternal Powerhouse



**HOFFMAN SENSATION 803**  
**SIRE OF 22J**





**BAR-H TIBBIE 87D**  
DAM OF 22J



**BAR-H TIBBIE 87D**  
DAM OF 22J



**HF TIBBIE 93U**  
GRAND DAM OF 22J



lot  
19J

# BAR-H SENSATION 19J

2233143 AHPC 19J 18-03-2021

S A V SENSATION 5615  
**HOFFMAN SENSATION 803**  
C A BRILL MISS EVERGREEN 101

S OPEN COUNTRY 454  
**BAR-H GLORA 32D**  
BAR-H ECHO 11Z

S A V REGISTRY 2831  
S A V BLACKCAP MAY 4136  
S A V BRILLIANCE 8077  
C A NW MISS EVERGREEN 813

HA OPEN COUNTRY 2047  
S GLORIA 0406  
HF BRUIN 96T  
BH 769 MISTY 30R

BW: 90 lbs. • ADJ WW: 760 lbs.

CE	BW	WW	YW	MILK	SC	CW	MARB	REA	FAT	MCE
4	2.4	57	109	35	1.12	44	0.53	0.53	0.031	8

-Big, long bodied power bull  
-Dam is extremely deep bodied and easy fleshing



24J

lot  
26J

# BAR-H SENSATION 26J

2233149 AHPC 26J 22-03-2021

S A V SENSATION 5615  
**HOFFMAN SENSATION 803**  
C A BRILL MISS EVERGREEN 101

BAR-H BALANCER 14X  
**BAR-H HOPE 65A**  
BH ROLLETTE 37W

S A V REGISTRY 2831  
S A V BLACKCAP MAY 4136  
S A V BRILLIANCE 8077  
C A NW MISS EVERGREEN 813

HF BRUIN 96T  
PERRYVILLE HOPE 12N  
HF HIGH ROLLER 79R  
BH 18M RUBY 4R

BW: 85 lbs. • ADJ WW: 664 lbs.

CE	BW	WW	YW	MILK	SC	CW	MARB	REA	FAT	MCE
3	2.8	46	82	25	0.57	32	0.03	0.49	-0.02	11

-Dam is moderate framed consistent producer  
-Maternal brothers working at Right Cross Ranch and K5 River Ranch

lot  
24J

# BAR-H ROYAL MINT 24J

2233147 AHPC 24J 21-03-2021

LD CAPITALIST 316  
**BAR-E-L ROYAL MINT 88G**  
HF EVENING TINGE 38C

BAR-H MINDBENDER 141D  
**BAR-H TIBBIE 6G**  
BAR-H GLORIA 57E

CONNEALY CAPITALIST 028  
LD DIXIE ERICA 2053  
LLB REFLECTION 607A  
HF EVENING TINGE 118Z

S SUMMIT 956  
HF TIBBIE 93U  
S OPEN COUNTRY 454  
PM TIBBIE 60'14

BW: 70 lbs. • ADJ WW: 786 lbs.

CE	BW	WW	YW	MILK	SC	CW	MARB	REA	FAT	MCE
10	-0.1	64	105	31	1.81	39	0.62	0.46	0.03	6

-Dam is a very good Mindbender 2 year old  
-Outstanding EPD profile  
-Heifer approved

lot  
35J

# BAR-H SENSATION 35J

2233154 AHPC 35J 27-03-2021

S A V SENSATION 5615  
**HOFFMAN SENSATION 803**  
C A BRILL MISS EVERGREEN 101

BT TITAN 0626  
**BAR-H ELBAR 84F**  
BAR-H ELSIEMERE 110C

S A V REGISTRY 2831  
S A V BLACKCAP MAY 4136  
S A V BRILLIANCE 8077  
C A NW MISS EVERGREEN 813

KOUPALS B&B TITAN 3013  
BT ELBAR 313  
BAR-H ELLIS 59Z  
BH EVENING TINGE 75Y

BW: 72 lbs. • ADJ WW: 753 lbs.

CE	BW	WW	YW	MILK	SC	CW	MARB	REA	FAT	MCE
-3	3.9	67	117	26	0.69	49	0.32	0.67	-0.027	5

-Dam is a deep bodied cow with an impeccable udder and teat score.  
-Was born small at 72 lb, genetic test came back a +3.9 on birth use on heifers with caution.

lot  
36J

# BAR-H MINDBENDER 36J

2242928 AHPC 36J 27-03-2021

S SUMMIT 956  
**BAR-H MINDBENDER 141D**  
HF TIBBIE 93U

S TITLEST 1145  
**BAR-H CORA 51A**  
BH ECHO 54Y

GDAR GAME DAY 449  
S PRIDE ANNA 709  
S A V 004 PREDOMINANT 4438  
HF TIBBIE 35K

RA LINCOLN W144  
S CORA 572  
HF BRUIN 96T  
BH TIBBIE 41U

BW: 92 lbs. • ADJ WW: 827 lbs.

CE	BW	WW	YW	MILK	SC	CW	MARB	REA	FAT	MCE
2	2.6	82	142	26	0.72	62	0.16	0.49	0.036	5

-Tremendous power bull by Mindbender  
-827 lb at 205 with no creep  
-Dam is an outstanding Titlest daughter



- Big bodied, soft made power bull
- Dam is an outstanding Open Country daughter designated an Elite Dam
- Grand mother still in production



**HOFFMAN SENSATION 803**  
SIRE OF 40J



**40J**

*lot*  
**40J**

BAR-H **SENSATION** 40J

2233157 AHPC 40J 28-03-2021

S A V SENSATION 5615  
**HOFFMAN SENSATION 803**  
C A BRILL MISS EVERGREEN 101

S OPEN COUNTRY 454  
**BAR-H GLORIA 113E**  
BH ECHO 78Y

S A V REGISTRY 2831  
S A V BLACKCAP MAY 4136  
S A V BRILLIANCE 8077  
C A NW MISS EVERGREEN 813  
HA OPEN COUNTRY 2047  
S GLORIA 0406  
HF BRUIN 96T  
BH ROLLETTE 36T

BW: 87 lbs. • ADJ WW: 797 lbs.

CE	BW	WW	YW	MILK	SC	CW	MARB	REA	FAT	MCE
0	3.4	67	112	24	0.9	43	0.28	0.65	-0.019	9

*lot*  
**41J**

BAR-H **ROYAL MINT** 41J

2233158 AHPC 41J 30-03-2021

LD CAPITALIST 316  
**BAR-E-L ROYAL MINT 88G**  
HF EVENING TINGE 38C

BAR-H CROSSFIRE 63A  
**BAR-H TIBBIE 31C**  
BAR-H HOPE 1A

CONNEALY CAPITALIST 028  
LD DIXIE ERICA 2053  
LLB REFLECTION 607A  
HF EVENING TINGE 118Z

S TITLEST 1145  
HF TIBBIE 93U  
BAR-H BALANCER 14X  
BH EVEING TINGE 68Y

BW: 86 lbs. • ADJ WW: 755 lbs.

CE	BW	WW	YW	MILK	SC	CW	MARB	REA	FAT	MCE
-5	5	67	115	26	1.17	56	0.34	0.76	-0.001	4

- Outstanding Royal Mint son
- Tremendous muscle and power
- Dam is simply outstanding
- Maternal sister was top selling Angus at the famous R Plus dispersal \$15,000
- Maternal brother at Perry Sawchuk



**BAR-H TIBBIE 31C**  
DAM OF 41J



**41J**



lot

## BAR-H MINDBENDER 53J

53J

2233177 AHPC 53J 09-04-2021

S SUMMIT 956  
**BAR-H MINDBENDER 141D**  
 HF TIBBIE 93U

S OPEN COUNTRY 454  
**BAR-H GLORIA 10E**  
 BAR-H CORA 38A

GDAR GAME DAY 449  
 S PRIDE ANNA 709  
 S A V 004 PREDOMINANT 4438  
 HF TIBBIE 35K

HA OPEN COUNTRY 2047  
 S GLORIA 0406  
 S TITLEST 1145  
 BH ECHO 19Y

BW: 70 lbs. • ADJ WW: 714 lbs.

CE	BW	WW	YW	MILK	SC	CW	MARB	REA	FAT	MCE
12	-1.2	56	96	28	1.18	36	0.38	0.27	0.068	8

-Dam is a moderate framed, with a very good udder and teat score  
 -Outstanding calving ease credentials  
 -Heifer approved



53J

lot

## BAR-H INTRINSIC 57J

57J

UNREG AHPC 57J 14-04-2021

CONNEALY INTRINSIC  
**S INTRINSIC 799**  
 S RITA 6341

BAR-H MINDBENDER 141D  
**BAR-H TIBBIE 29G**  
 BAR-H BLACKBIRD 60E

CONNEALY GREELEY  
 JAZZY OF CONANGA 4660 860C  
 CONNEALY FREIGHTLINER  
 S RITA 4309

S SUMMIT 956  
 HF TIBBIE 93U  
 KR CASH CI 4602  
 BAR-H ECHO 11Z

BW: 65 lbs. • ADJ WW: - lbs.

CE	BW	WW	YW	MILK	SC	CW	MARB	REA	FAT	MCE

-Heifer approved

lot

## BAR-H INTRINSIC 63J

63J

2233186 AHPC 63J 14-04-2021

CONNEALY INTRINSIC  
**S INTRINSIC 799**  
 S RITA 6341

BAR-H MINDBENDER 141D  
**BAR-H TIBBIE 148G**  
 BH EVENING TINGE 87Y

CONNEALY GREELEY  
 JAZZY OF CONANGA 4660 860C  
 CONNEALY FREIGHTLINER  
 S RITA 4309

S SUMMIT 956  
 HF TIBBIE 93U  
 HF DONE DEAL 64T  
 BH ROLLETTE 6T

BW: 68 lbs. • ADJ WW: 673 lbs.

CE	BW	WW	YW	MILK	SC	CW	MARB	REA	FAT	MCE
8	1	51	92	27						9

-Heifer approved

lot

## BAR-H MINDBENDER 69J

69J

2233196 AHPC 69J 15-04-2021

S SUMMIT 956  
**BAR-H MINDBENDER 141D**  
 HF TIBBIE 93U

S TITLEST 1145  
**BAR-H CORA 61C**  
 BH EVENING TINGE 46Y

GDAR GAME DAY 449  
 S PRIDE ANNA 709  
 S A V 004 PREDOMINANT 4438  
 HF TIBBIE 35K

RA LINCOLN W144  
 S CORA 572  
 HF DONE DEAL 64T  
 HF TIBBIE 88S

BW: 85 lbs. • ADJ WW: 744 lbs.

CE	BW	WW	YW	MILK	SC	CW	MARB	REA	FAT	MCE
7	1.1	61	107	28	0.86	39	0.28	0.27	0.06	9

-Tremendous balance and style  
 -Dam is a very good, big bodied Titlest daughter  
 -Generations of good udder and teat scores  
 -Bigger heifer approved

lot

## BAR-H OPEN COUNTRY 75J

75J

2233208 AHPC 75J 15-04-2021

HA OPEN COUNTRY 2047  
**S OPEN COUNTRY 454**  
 S GLORIA 0406

KR CASH CI 4602  
**BAR-H BLACKBIRD 90E**  
 BH EVENING TINGE 62Y

VERMILION XTRA X  
 HA BEMINDFUL MAID 4205  
 SHIPWHEEL CHINOOK  
 S GLORIA 858

BARSTOW CASH  
 WK BLACKBIRD 5066  
 HF DONE DEAL 64T  
 PERRYVILLE KEWPIE DOLL 8N

BW: 84 lbs. • ADJ WW: 682 lbs.

CE	BW	WW	YW	MILK	SC	CW	MARB	REA	FAT	MCE
4	2.5	47	86	25	0.84	31	0.52	0.36	0.037	11

-Tremendous amount of balance and style  
 -Dam is a very good looking daughter of KR Cash 4602  
 -Fancy calves bring a premium, he will do that.  
 -Bigger heifer approved



*lot*  
**77J**

BAR-H **MINDBENDER** 77J

2233210 AHPC 77J 16-04-2021

S SUMMIT 956  
**BAR-H MINDBENDER 141D**  
HF TIBBIE 93U

KR CASH CI 4602  
**BAR-H BLACKBIRD 73E**  
BAR-H CORA 24A

GDAR GAME DAY 449  
S PRIDE ANNA 709  
S A V 004 PREDOMINANT 4438  
HF TIBBIE 35K

BARSTOW CASH  
WK BLACKBIRD 5066  
S TITLEST 1145  
BH ECHO 90Y

BW: 86 lbs. • ADJ WW: 729 lbs.

CE	BW	WW	YW	MILK	SC	CW	MARB	REA	FAT	MCE
8	1.7	54	102	34	1.06	43	0.48	0.28	0.063	8

- Pen favorite, very attractive
- Dam is big bodied and good
- Keep all his daughters
- Bigger heifer approved

*lot*  
**84J**

BAR-H **MINDBENDER** 84J

2233223 AHPC 84J 17-04-2021

S SUMMIT 956  
**BAR-H MINDBENDER 141D**  
HF TIBBIE 93U

S TITLEST 1145  
**BAR-H CORA 60D**  
BH ECHO 79Y

GDAR GAME DAY 449  
S PRIDE ANNA 709  
S A V 004 PREDOMINANT 4438  
HF TIBBIE 35K

RA LINCOLN W144 AMF  
S CORA 572  
HF BRUIN 96T  
BH TIBBIE 23U

BW: 80 lbs. • ADJ WW: 743 lbs.

CE	BW	WW	YW	MILK	SC	CW	MARB	REA	FAT	MCE
7	0.7	57	99	30	1.21	35	0.31	0.21	0.07	7

- Mindbender son with balance and style
- Very good Titlest mother
- Heifer approved

*lot*  
**91J**

BAR-H **TITAN** 91J

2233229 AHPC 91J 20-04-2021

KOUPALS B&B TITAN 3013  
**BT TITAN 0626**  
BT ELBAR 313

S TITLEST 1145  
**BAR-H CORA 54C**  
BH EVENING TINGE 26Y

KOUPALS B&B EXTRA 0011  
B&B BLACKCAP 0068  
CONNEALY EARNAN 076E  
BT ELBAR OF KIN 521

RA LINCOLN W144 AMF  
S CORA 572  
HF DONE DEAL 64T  
HF MAYFLOWER 108S

BW: 84 lbs. • ADJ WW: 702 lbs.

CE	BW	WW	YW	MILK	SC	CW	MARB	REA	FAT	MCE
0	2	59	98	22		35	0.28	0.47	0.019	6

- Titan progeny are great footed cattle
- Dam is a very good Titlest daughter with a great udder



**84J**

*lot*  
**93J**

BAR-H **OPEN COUNTRY** 93J

2233231 AHPC 93J 21-04-2021

HA OPEN COUNTRY 2047  
**S OPEN COUNTRY 454**  
S GLORIA 0406

KR CASH CI 4602  
**BAR-H BLACKBIRD 29E**  
BAR-H TIBBIE 5C

VERMILION XTRA X  
HA BEMINDFUL MAID 4205  
SHIPWHEEL CHINOOK  
S GLORIA 858

BARSTOW CASH  
WK BLACKBIRD 5066  
BAR-H CROSSFIRE 63A  
BAR-H HOPE 23A

BW: 84 lbs. • ADJ WW: 768 lbs.

CE	BW	WW	YW	MILK	SC	CW	MARB	REA	FAT	MCE
6	0.8	67	116	24						9

- Very good Open Country son
- His dam is a very good cow with an outstanding udder and teat score
- Bigger heifer approved



**93J**



*lot* BAR-H **OPEN COUNTRY** 94J

**94J**

2233232 AHPC 94J 21-04-2021

HA OPEN COUNTRY 2047  
**S OPEN COUNTRY 454**  
S GLORIA 0406

KR CASH CI 4602  
**BAR-H BLACKBIRD 65E**  
BAR-H CORA 19A

VERMILION XTRA X  
HA BEMINDFUL MAID 4205  
SHIPWHEEL CHINOOK  
S GLORIA 858

BARSTOW CASH  
WK BLACKBIRD 5066  
S TITTEST 1145  
BH ECHO 64Y

BW: 88 lbs. • ADJ WW: 743 lbs.

CE	BW	WW	YW	MILK	SC	CW	MARB	REA	FAT	MCE
1	3.3	68	120	26						6

-Dam is a long bodied big bodied cow

*lot* BAR-H **MINDBENDER** 96J

**96J**

2233233 AHPC 96J 22-04-2021

S SUMMIT 956  
**BAR-H MINDBENDER 141D**  
HF TIBBIE 93U

S GLENFIELD 2141  
**BAR-H PRIDE 49C**  
BH ECHO 68X

GDAR GAME DAY 449  
S PRIDE ANNA 709  
S A V 004 PREDOMINANT 4438  
HF TIBBIE 35K

S CHISUM 6175  
BASIN PRIDE 9112  
HF BRUIN 96T  
BH ROLLETTE 2T

BW: 89 lbs. • ADJ WW: 731 lbs.

CE	BW	WW	YW	MILK	SC	CW	MARB	REA	FAT	MCE
2	3.3	58	100	33	1.1	44	0.25	0.42	0.048	5

-Dam is a beautiful grand daughter of S Chisum with an ideal udder and teat score.

*lot* BAR-H **ROYAL MINT** 97J

**97J**

2233234 AHPC 97J 22-04-2021

LD CAPITALIST 316  
**BAR-E-L ROYAL MINT 88G**  
HF EVENING TINGE 38C

S INTRINSIC 799  
**BAR-H I RITA 89G**  
BAR-H CORA 19B

CONNEALY CAPITALIST 028  
LD DIXIE ERICA 2053  
LLB REFLECTION 607A  
HF EVENING TINGE 118Z

CONNEALY INTRINSIC  
S RITA 6341  
S TITTEST 1145  
BH ECHO 54Y

BW: 80 lbs. • ADJ WW: 668 lbs.

CE	BW	WW	YW	MILK	SC	CW	MARB	REA	FAT	MCE
8	1.8	58	105	26						6

-Smaller framed Royal Mint son that can be used on heifers for years  
-Dam is a very nice Intrinsic daughter, outcross genetics in Canada  
-Heifer approved

*lot* BAR-H **MINDBENDER** 104J

**104J**

2233239 AHPC 104J 23-04-2021

S SUMMIT 956  
**BAR-H MINDBENDER 141D**  
HF TIBBIE 93U

S TITTEST 1145  
**BAR-H CORA 57F**  
BAR-H HOPE 71B

GDAR GAME DAY 449  
S PRIDE ANNA 709  
S A V 004 PREDOMINANT 4438  
HF TIBBIE 35K

RA LINCOLN W144  
S CORA 572  
BAR-H BALANCER 14X  
BH EVENING TINGE 1W

BW: 70 lbs. • ADJ WW: 675 lbs.

CE	BW	WW	YW	MILK	SC	CW	MARB	REA	FAT	MCE
12	-1	49	85	29	0.88	31	0.3	0.3	0.052	9

-Very good Titlest dam  
-Heifer approved



**MINDBENDER DAUGHTER**

*lot* BAR-H **MINDBENDER** 107J

**107J**

2233240 AHPC 107J 24-04-2021

S SUMMIT 956  
**BAR-H MINDBENDER 141D**  
HF TIBBIE 93U

HF DONE DEAL 64T  
**BH EVENING TINGE 24X**  
PERRYVILLE ALLEGRA 40M

GDAR GAME DAY 449  
S PRIDE ANNA 709  
S A V 004 PREDOMINANT 4438  
HF TIBBIE 35K

HF DONE RIGHT 125R  
HF EVENING TINGE 99R  
PERRYVILLE GLOBAL 33K  
PERRYVILLE ALLEGRA 1K

BW: 98 lbs. • ADJ WW: 766 lbs.

CE	BW	WW	YW	MILK	SC	CW	MARB	REA	FAT	MCE
-6	5.2	50	85	31	0.71	27	0.25	0.28	0.04	3

-Dam has a beautiful profile and udder  
-Keep all his daughters  
-Cow bull

**BRED**  
for Performance  
**EVALUATED**  
by comparison



*lot* BAR-H OPEN COUNTRY 108J  
108J

2233241 AHPC 108J 24-04-2021

HA OPEN COUNTRY 2047  
**S OPEN COUNTRY 454**  
S GLORIA 0406

HF DONE DEAL 64T  
**BH EVENING TINGE 75Y**  
BH ROLLETTE 34T

VERMILION XTRA X  
HA BEMINDFUL MAID 4205  
SHIPWHEEL CHINOOK  
S GLORIA 858

HF DONE RIGHT 125R  
HF EVENING TINGE 99R  
HF HIGH ROLLER 79R  
PERRYVILLE HOPE 12N

BW: 94 lbs. • ADJ WW: 699 lbs.

CE	BW	WW	YW	MILK	SC	CW	MARB	REA	FAT	MCE
-5	5.4	60	103	26	0.46	39	0.41	0.5	0.018	6

-Dam is moderate framed and attractive  
-Great udder and teat score  
-Cow bull



Bar-H Mindbender 141D

*lot* BAR-H OPEN COUNTRY 114J  
114J

2233246 AHPC 114J 25-04-2021

HA OPEN COUNTRY 2047  
**S OPEN COUNTRY 454**  
S GLORIA 0406

KR CASH CI 4602  
**BAR-H BLACKBIRD 123E**  
BH ECHO 68X

VERMILION XTRA X  
HA BEMINDFUL MAID 4205  
SHIPWHEEL CHINOOK  
S GLORIA 858

BARSTOW CASH  
WK BLACKBIRD 5066  
HF BRUIN 96T  
BH ROLLETTE 2T

BW: 75 lbs. • ADJ WW: 745 lbs.

CE	BW	WW	YW	MILK	SC	CW	MARB	REA	FAT	MCE
6	1.8	63	110	27						10

-Dam is a big smooth Cash daughter  
-Heifer approved

*lot* BAR-H MINDBENDER 120J  
120J

2233249 AHPC 120J 26-04-2021

S SUMMIT 956  
**BAR-H MINDBENDER 141D**  
HF TIBBIE 93U

HF DONE DEAL 64T  
**BH EVENING TINGE 2W**  
BH ROLLETTE 29T

GDAR GAME DAY 449  
S PRIDE ANNA 709  
S A V 004 PREDOMINANT 4438  
HF TIBBIE 35K

HF DONE RIGHT 125R  
HF EVENING TINGE 99R  
HF HIGH ROLLER 79R  
PERRYVILLE LACE 15N

BW: 85 lbs. • ADJ WW: 684 lbs.

CE	BW	WW	YW	MILK	SC	CW	MARB	REA	FAT	MCE
1	3.9	47	87	29	0.83	30	0.31	0.36	0.026	7

-Dam is a never miss cow having her 12th calf this spring  
-Longevity here

*lot* BAR-H OPEN COUNTRY 122J  
122J

2233251 AHPC 122J 26-04-2021

HA OPEN COUNTRY 2047  
**S OPEN COUNTRY 454**  
S GLORIA 0406

BAR-H BALANCER 14X  
**BAR-H HOPE 62A**  
BH ROLLETTE 2T

VERMILION XTRA X  
HA BEMINDFUL MAID 4205  
SHIPWHEEL CHINOOK  
S GLORIA 858

HF BRUIN 96T  
PERRYVILLE HOPE 12N  
HF HIGH ROLLER 79R  
BH 7N SUGAR 10R

BW: 86 lbs. • ADJ WW: 771 lbs.

CE	BW	WW	YW	MILK	SC	CW	MARB	REA	FAT	MCE
3	3.7	59	103	30	0.69	41	0.32	0.57	0.014	8

-Dam is a very consistent producer

*lot* BAR-H OPEN COUNTRY 124J  
124J

2233254 AHPC 124J 27-04-2021

HA OPEN COUNTRY 2047  
**S OPEN COUNTRY 454**  
S GLORIA 0406

KR CASH CI 4602  
**BAR-H BLACKBIRD 189E**  
BH ROLLETTE 34T

VERMILION XTRA X  
HA BEMINDFUL MAID 4205  
SHIPWHEEL CHINOOK  
S GLORIA 858

BARSTOW CASH  
WK BLACKBIRD 5066  
HF HIGH ROLLER 79R  
PERRYVILLE HOPE 12N

BW: 90 lbs. • ADJ WW: 775 lbs.

CE	BW	WW	YW	MILK	SC	CW	MARB	REA	FAT	MCE
3	2.8	59	102	26	0.8	37	0.42	0.43	0.04	7

-Notice his weaning weight with no creep  
-Comes from one of the top cow families on the ranch  
-Moderate cow that gets it done every year



*lot* BAR-H **MINDBENDER** 125J

**125J** 2233255 AHPC 125J 27-04-2021

S SUMMIT 956  
**BAR-H MINDBENDER 141D**  
HF TIBBIE 93U

S OPEN COUNTRY 454  
**BAR-H GLORIA 57E**  
PM TIBBIE 60'14

GDAR GAME DAY 449  
S PRIDE ANNA 709  
S A V 004 PREDOMINANT 4438  
HF TIBBIE 35K

HA OPEN COUNTRY 2047  
S GLORIA 0406  
HF THUNDERBIRD 146Y  
MVF TIBBIE 424U

BW: 85 lbs. • ADJ WW: 763 lbs.

CE	BW	WW	YW	MILK	SC	CW	MARB	REA	FAT	MCE
7	2.2	64	113	33	1.16	44	0.36	0.41	0.064	5

- Real good mother to this bull
- Bigger heifer bull



*lot* BAR-H **INTRINSIC** 126J

**126J** 2233256 AHPC 126J 27-04-2021

CONNEALY INTRINSIC  
**S INTRINSIC 799**  
S RITA 6341

BAR-H MINDBENDER 141D  
**BAR-H TIBBIE 23G**  
BAR-H BLACKBIRD 65E

CONNEALY GREELEY  
JAZZY OF CONANGA 4660 860C  
CONNEALY FREIGHTLINER  
S RITA 4309

S SUMMIT 956  
HF TIBBIE 93U  
KR CASH CI 4602  
BAR-H CORA 19A

BW: 86 lbs. • ADJ WW: 761 lbs.

CE	BW	WW	YW	MILK	SC	CW	MARB	REA	FAT	MCE
2	4.2	64	116	28						5

- Real neat package here, lots of muscle
- Cow bull

*lot* BAR-H **OPEN COUNTRY** 129J

**129J** 2233260 AHPC 129J 27-04-2021

HA OPEN COUNTRY 2047  
**S OPEN COUNTRY 454**  
S GLORIA 0406

KR CASH CI 4602  
**BAR-H BLACKBIRD 34E**  
BAR-H RITA 23C

VERMILION XTRA X  
HA BEMINDFUL MAID 4205  
SHIPWHEEL CHINOOK  
S GLORIA 858

BARSTOW CASH  
WK BLACKBIRD 5066  
EXAR FOREMAN 3871B  
BAR-H CORA 22A

BW: 84 lbs. • ADJ WW: 782 lbs.

CE	BW	WW	YW	MILK	SC	CW	MARB	REA	FAT	MCE
6	2.2	70	126	21	1.12	45	0.58	0.43	0.055	10

- Generations of big bodied, good uddered cows
- Note weaning weight, no creep
- Great EPD profile
- Bigger heifer bull
- Heifer approved

*lot* BAR-H **OPEN COUNTRY** 132J

**132J** 2233264 AHPC 132J 27-04-2021

HA OPEN COUNTRY 2047  
**S OPEN COUNTRY 454**  
S GLORIA 0406

BAR-H BALANCER 14X  
**BAR-H HOPE 35Z**  
BH EVENING TINGE 24X

VERMILION XTRA X  
HA BEMINDFUL MAID 4205  
SHIPWHEEL CHINOOK  
S GLORIA 858

HF BRUIN 96T  
PERRYVILLE HOPE 12N  
HF DONE DEAL 64T  
PERRYVILLE ALLEGRA 40M

BW: 87 lbs. • ADJ WW: 715 lbs.

CE	BW	WW	YW	MILK	SC	CW	MARB	REA	FAT	MCE
0	3.2	54	91	27	0.59	31	0.31	0.41	0.022	5

- Very good cow family
- Cow bull

VIEW ALL VIDEOS



CATTLEVIDS.CA





*S Intrinsic 799*

*lot*  
**134J**

BAR-H **INTRINSIC** 134J

UNREG AHPC 134J 27-04-2021

CONNEALY INTRINSIC  
**S INTRINSIC 799**  
S RITA 6341

S OPEN COUNTRY 454  
**BAR-H GLORIA 80G**  
BAR-H ECHO 32Z

CONNEALY GREELEY  
JAZZY OF CONANGA 4660 860C  
CONNEALY FREIGHTLINER  
S RITA 4309

HA OPEN COUNTRY 2047  
S GLORIA 0406  
HF BRUIN 96T  
BH 7N SASHA 11R

BW: 70 lbs. • ADJ WW:

CE	BW	WW	YW	MILK	SC	CW	MARB	REA	FAT	MCE
										5

-Heifer approved

*lot*  
**141J**

BAR-H **MINDBENDER** 141J

2233332 AHPC 141J 05-05-2021

S SUMMIT 956  
**BAR-H MINDBENDER 141D**  
HF TIBBIE 93U

S TITLEST 1145  
**BAR-H CORA 58F**  
BH EVENING TINGE 1W

GDAR GAME DAY 449  
S PRIDE ANNA 709  
S A V 004 PREDOMINANT 4438  
HF TIBBIE 35K

RA LINCOLN W144  
S CORA 572  
HF DONE DEAL 64T  
BH ELSIEMERE 3T

BW: 70 lbs. • ADJ WW: 686 lbs.

CE	BW	WW	YW	MILK	SC	CW	MARB	REA	FAT	MCE
10	-0.8	50	88	32	0.91	31	0.27	0.28	0.046	7

-Real neat package here, lots of muscle  
-Cow bull

*lot*  
**137J**

BAR-H **TITAN** 137J

2233327 AHPC 137J 30-04-2021

BT TITAN 0626  
**BAR-H TITAN 51F**  
BAR-H ALLEGRA 43Z

HF DONE DEAL 64T  
**BH EVENING TINGE 32Y**  
BH 18M SILKY 17R

KOUPALS B&B TITAN 3013  
BT ELBAR 313  
BH POUNDMAKER 10X  
BH ECHO 22W

HF DONE RIGHT 125R  
HF EVENING TINGE 99R  
PERRYVILLE RESOLVE 18M  
PERRYVILLE SILKY 31N

BW: 81 lbs. • ADJ WW: 1bs.

CE	BW	WW	YW	MILK	SC	CW	MARB	REA	FAT	MCE
-2	2.5	59	97	24	-0.28	40	0.45	0.52	0.002	10

-Dam is a big bodied good uddered cow with a great teat score  
-Cow bull

*lot*  
**152J**

BAR-H **INTRINSIC** 152J

UNREG AHPC 134J 27-04-2021

CONNEALY INTRINSIC  
**S INTRINSIC 799**  
S RITA 6341

S OPEN COUNTRY 454  
**BAR-H GLORIA 80G**  
BAR-H ECHO 32Z

CONNEALY GREELEY  
JAZZY OF CONANGA 4660 860C  
CONNEALY FREIGHTLINER  
S RITA 4309

HA OPEN COUNTRY 2047  
S GLORIA 0406  
HF BRUIN 96T  
BH 7N SASHA 11R

BW: 70 lbs. • ADJ WW:

CE	BW	WW	YW	MILK	SC	CW	MARB	REA	FAT	MCE
										5

-Heifer approved

lot

155J

BAR-H ROYAL MINT 155J

2236061

BARH 155J

13-05-2021

LD CAPITALIST 316

**BAR-E-L ROYAL MINT 88G**

HF EVENING TINGE 38C

HF HIGH ROLLER 79R

**BH TIBBIE 2Y**

HF TIBBIE 93U

CONNEALY CAPITALIST 028

LD DIXIE ERICA 2053

LLB REFLECTION 607A

HF EVENING TINGE 118Z

HF FREE WHEELER 191N

HF TIBBIE 86K

S A V 004 PREDOMINANT 4438

HF TIBBIE 35K

BW: 80 lbs. • ADJ WW: 836 lbs.

CE	BW	WW	YW	MILK	SC	CW	MARB	REA	FAT	MCE
1	4.1	82	141	22	1.14	73	0.13	0.67	0.002	6

- Big time beef bull here with genuine muscle
- Tremendous length of body with a leg on every corner
- Generations of great cows on both sides of his paper
- His Dam may be the best cow we own!!
- Maternal brother sold to Bryce and Wyatt Burnett for \$15,000.00



BAR-H ROYAL MINT 88G  
SIRE OF 155J





155J



*MATERNAL SISTER BY HOFFMANSENSATION 803*



*HF TIBBIE 93U  
GRAND DAM OF 155J*





*S Open Country 454*

*lot*  
**171J**

BAR-H ROYAL MINT 171J

UNREG AHPC 171J 06-01-2021

LD CAPITALIST 316  
**BAR-E-L ROYAL MINT 88G**  
HF EVENING TINGE 38C

S A V PIONEER 7301  
**BROOKMORE MAXIE 30Z**  
BROOKMORE MAXIE 36W

CONNELLY CAPITALIST 028  
LD DIXIE ERICA 2053  
LLB REFLECTION 607A  
HF EVENING TINGE 118Z

S A V FINAL ANSWER 0035  
S A V BLACKBIRD 5297  
MOHNEN DYNAMITE 1356  
BROOKMORE MAXIE 219S

PREDICTED

BW: 70 lbs. • ADJ WW:

CE	BW	WW	YW	MILK	SC	CW	MARB	REA	FAT	MCE
8.5	1.6	65	118	25	1.18	54	0.55	0.56	0.021	9.5

-Heifer approved

*lot*  
**174J**

BAR-H MINDBENDER 174J

UNREG AHPC 174J 06-02-2021

S SUMMIT 956  
**BAR-H MINDBENDER 141D**  
HF TIBBIE 93U

HF DONE DEAL 64T  
**BH EVENING TINGE 4X**  
HF TIBBIE 93U

GDAR GAME DAY 449  
S PRIDE ANNA 709  
S A V 004 PREDOMINANT 4438  
HF TIBBIE 35K

HF DONE RIGHT 125R  
HF EVENING TINGE 99R  
S A V 004 PREDOMINANT 4438  
HF TIBBIE 35K

PREDICTED

BW: 78 lbs. • ADJ WW:

CE	BW	WW	YW	MILK	SC	CW	MARB	REA	FAT	MCE
1.0	3.0	58	102	27	0.74	30	0.38	0.28	0.053	6.0

-Heifer approved

VIEW ALL VIDEOS



CATTLEVIDS.CA

*lot*  
**183J**

BAR-H ROYAL MINT 183J

UNREG AHPC 183J 25-05-2021

LD CAPITALIST 316  
**BAR-E-L ROYAL MINT 88G**  
HF EVENING TINGE 38C

BAR-H MINDBENDER 141D  
**BAR-H TIBBIE 11G**  
BAR-H GLORIA 12E

CONNELLY CAPITALIST 028  
LD DIXIE ERICA 2053  
LLB REFLECTION 607A  
HF EVENING TINGE 118Z

S SUMMIT 956  
HF TIBBIE 93U  
S OPEN COUNTRY 454  
BAR-H CORA 30A

PREDICTED

BW: 68 lbs. • ADJ WW:

CE	BW	WW	YW	MILK	SC	CW	MARB	REA	FAT	MCE
4.5	3.2	67	121	28	1.21	51	0.62	0.42	0.048	5.0

-Dam is a very good Mindbender daughter  
-Heifer approved



# OPEN FEMALES

**NOTE: ALL HEIFERS HAVE BEEN WEANED OFF THEIR MOTHERS WITHOUT CREEP FEED AND HAVE BEEN MANAGED WITH THEIR FUTURE IN MIND**

*lot*  
**2K**

BAR-H **TIBBIE** 2K

2292195 AHPC 2K 18-01-2022

LD CAPITALIST 316  
**BAR-E-L ROYAL MINT 88G**  
HF EVENING TINGE 38C

CONNEALY CAPITALIST 028  
LD DIXIE ERICA 2053  
LLB REFLECTION 607A  
HF EVENING TINGE 118Z

BAR-H MINDBENDER 141D  
**BAR-H TIBBIE 1F**  
BAR-H CORA 97D

S SUMMIT 956  
HF TIBBIE 93U  
S TITLEST 1145  
BH EVENING TINGE 87Y

BW: 84 lbs. • ADJ WW: 615 lbs.

CE	BW	WW	YW	MILK	SC	CW	MARB	REA	FAT	MCE
3	3.4	69	121	30	0.94	49	0.52	0.47	0.037	5

-Dam 1F and grand dam 97D were both class and division winners at CWA  
-Generations of big bodied, soft made cows  
-Dam is an outstanding brood cow with an impeccable udder and teat score



**2K**

BAR-H TIBBIE 1F

*lot*  
**5K**

BAR-H **EVENING TINGE** 5K

2292197 AHPC 5K 01-02-2022

LD CAPITALIST 316  
**BAR-E-L ROYAL MINT 88G**  
HF EVENING TINGE 38C

CONNEALY CAPITALIST 028  
LD DIXIE ERICA 2053  
LLB REFLECTION 607A  
HF EVENING TINGE 118Z

BAR-H MINDBENDER 141D  
**BAR-H TIBBIE 14H**  
BAR-H CORA 21B

S SUMMIT 956  
HF TIBBIE 93U  
S TITLEST 1145  
BH EVENING TINGE 32Y

BW: 68 lbs. • ADJ WW: 638 lbs.

CE	BW	WW	YW	MILK	SC	CW	MARB	REA	FAT	MCE
10	1.5	67	112	26	0.89	50	0.73	0.51	0.058	10

-Sharp made and attractive Royal Mint daughter  
-Dam is an extremely deep bodied Mindbender daughter with impeccable numbers  
-Outstanding cows stack this females pedigree teat score



**5K**

*lot*  
**25K**

BAR-H **RITA** 25K

2298804 AHPC 25K 05-03-2022

CONNEALY INTRINSIC  
**S INTRINSIC 799**  
S RITA 6341

CONNEALY GREELEY  
JAZZY OF CONANGA 4660 860C  
CONNEALY FREIGHTLINER  
S RITA 4309

BT TITAN 0626  
**BAR-H ELBAR 64F**  
BAR-H CORA 76C

KOUPALS B&B TITAN 3013  
BT ELBAR 313  
S TITLEST 1145  
BH ECHO 37Y

BW: 85 lbs. • ADJ WW: 621 lbs.

CE	BW	WW	YW	MILK	SC	CW	MARB	REA	FAT	MCE
-1	4.4	58	103	27						6

-Near perfect design structurally  
-Intrinsic daughters are making outstanding cows with near perfect udder and teat scores  
-Dam is a beautiful Titan daughter



**25K**





*lot*  
**42K**

BAR-H **RITA** 42K

CONNEALY INTRINSIC  
**S INTRINSIC 799**  
S RITA 6341

S TITLEST 1145  
**BAR-H CORA 76C**  
BH ECHO 37Y

CONNEALY GREELEY  
JAZZY OF CONANGA 4660 860C  
CONNEALY FREIGHTLINER  
S RITA 4309

RA LINCOLN W144  
S CORA 572  
HF BRUIN 96T  
BH TIBBIE 39U

BW: 85 lbs. • ADJ WW: 685 lbs.

CE	BW	WW	YW	MILK	SC	CW	MARB	REA	FAT	MCE
6	1.5	59	101	28	1.6	33	0.26	0.41	0.029	7

- Softer made daughter of Intrinsic
- Great spread from birth to yearling growth
- Near 700 lb weaning with no creep
- Dam is a very productive Titlest daughter



*lot*  
**44K**

BAR-H **MISS EVERGREEN** 44K

S A V SENSATION 5615  
**HOFFMAN SENSATION 803**  
C A BRILL MISS EVERGREEN 101

BAR-H CASH 93E  
**BAR-H TIBBIE 97G**  
BAR-H CORA 101B

S A V REGISTRY 2831  
S A V BLACKCAP MAY 4136  
S A V BRILLIANCE 8077  
C A NW MISS EVERGREEN 813

KR CASH CI 4602  
BAR-H TIBBIE 24C  
S TITLEST 1145  
BH ECHO 63Y

BW: 88 lbs. • ADJ WW: 689 lbs.

CE	BW	WW	YW	MILK	SC	CW	MARB	REA	FAT	MCE
8	0.1	50	90	27						11.5

- Sharp made, clean fronted with lots of extension
- Deep bodied
- Hoffman Sensation daughters are very good



*lot*  
**49K**

BAR-H **MISS EVERGREEN** 49K

S A V SENSATION 5615  
**HOFFMAN SENSATION 803**  
C A BRILL MISS EVERGREEN 101

S INTRINSIC 799  
**BAR-H RITA 34G**  
BAR-H RITA 23C

S A V REGISTRY 2831  
S A V BLACKCAP MAY 4136  
S A V BRILLIANCE 8077  
C A NW MISS EVERGREEN 813

CONNEALY INTRINSIC  
S RITA 6341  
EXAR FOREMAN 3871B  
BAR-H CORA 22A

BW: 68 lbs. • ADJ WW: 640 lbs.

CE	BW	WW	YW	MILK	SC	CW	MARB	REA	FAT	MCE
5	1.9	51	97	25	0.91	41	0.26	0.47	0.008	11

- Another deep bodied sharp made Sensation cow prospect
- Added bonus **show prospect**



*lot* BAR-H **EVENING TINGE** 62K  
**62K** 2298803 AHPC 62K 27-03-2022

LD CAPITALIST 316  
**BAR-E-L ROYAL MINT 88G**  
 HF EVENING TINGE 38C

BT TITAN 0626  
**BAR-H ELBAR 64G**  
 BAR-H CORA 136D

CONNELLY CAPITALIST 028  
 LD DIXIE ERICA 2053  
 LLB REFLECTION 607A  
 HF EVENING TINGE 118Z

KOUPALS B&B TITAN 3013  
 BT ELBAR 313  
 S TITLEST 1145  
 BAR-H TIBBIE 77Z

BW: 94 lbs. • ADJ WW: 698 lbs.

CE	BW	WW	YW	MILK	SC	CW	MARB	REA	FAT	MCE
-4	5.8	78	133	23						2

- Soft made, sharp fronted.
- Love her overall balance and look
- All Titan daughters are very good udder and teat scores
- Grand dam 136D is one of our best Titlest daughters



*lot* BAR-H **RITA** 70K  
**70K** 2298801 AHPC 70K 31-03-2022

CONNELLY INTRINSIC  
**S INTRINSIC 799**  
 S RITA 6341

S OPEN COUNTRY 454  
**BAR-H GLORIA 7E**  
 BH ROLLETTE 6T

CONNELLY GREELEY  
 JAZZY OF CONANGA 4660 860C  
 CONNELLY FREIGHTLINER  
 S RITA 4309

HA OPEN COUNTRY 2047  
 S GLORIA 0406  
 HF HIGH ROLLER 79R  
 PERRYVILLE ALLEGRA 40M

BW: 92 lbs. • ADJ WW: 701 lbs.

CE	BW	WW	YW	MILK	SC	CW	MARB	REA	FAT	MCE
-1	5.1	69	119	29	1.09	37	0.31	0.34	0.053	4

- 700 lb no creep
- Sharp fronted typical of Intrinsic daughters
- Grand dam 6T was an outstanding High Roller daughter



*lot* BAR-H **MISS EVERGREEN** 73K  
**73K** 2298800 AHPC 73K 03-04-2022

S A V SENSATION 5615  
**HOFFMAN SENSATION 803**  
 C A BRILL MISS EVERGREEN 101

BAR-H MINDBENDER 141D  
**BAR-H TIBBIE 22G**  
 BAR-H BLACKBIRD 90E

S A V REGISTRY 2831  
 S A V BLACKCAP MAY 4136  
 S A V BRILLIANCE 8077  
 C A NW MISS EVERGREEN 813

S SUMMIT 956  
 HF TIBBIE 93U  
 KR CASH C1 4602  
 BH EVENING TINGE 62Y

BW: 68 lbs. • ADJ WW: 678 lbs.

CE	BW	WW	YW	MILK	SC	CW	MARB	REA	FAT	MCE
6	1.7	56	99	28						11

- Beautifully structured Hoffman Sensation daughter
- Grand dam 90E is a front pasture Cash daughter







*lot* BAR-H MISS EVERGREEN 76K  
76K

S A V SENSATION 5615  
**HOFFMAN SENSATION 803**  
C A BRILL MISS EVERGREEN 101

S INTRINSIC 799  
**BAR-H I RITA 89G**  
BAR-H CORA 19B

S A V REGISTRY 2831  
S A V BLACKCAP MAY 4136  
S A V BRILLIANCE 8077  
C A NW MISS EVERGREEN 813

CONNEALY INTRINSIC  
S RITA 6341  
S TITLEST 1145  
BH ECHO 54Y

BW: 82 lbs. • ADJ WW: 722 lbs.

CE	BW	WW	YW	MILK	SC	CW	MARB	REA	FAT	MCE
4	2.5	70	122	26						9

-Another Sensation show prospect  
-So many good cows deep in this ones background



**BAR-H RITA 110H BY INTRINSIC 799**  
**CHAMPION YEARLING FEMALE, JUNIOR DIVISION**  
**WESTERN AGRIBITION, REGINA, SK**  
**SOLD TO KNUTSON AND RIDEAU FOR \$26,000.00**



**BAR-H TIBBIE 64H**  
**DAUGHTER OF HOFFMAN SENSATION 803**

**Can't make it to the sale? Watch & Bid Online.**

With DLMS you can Watch, Listen & Bid on your computer just like you were there with online bidding over the internet

**Instructions for Viewing And Bidding At the Sale**

Visit [www.dlms.ca](http://www.dlms.ca), Fill out the registration form located under registration and sign-up for your free user account to select a username and password.

**BIDDERS** - To be approved as a bidder, Log in and click BUYER APPROVAL tab, select the sale you are interested in bidding at and click sign up.

**For more information or for help getting approved Call:**  
**Mark Shologan - 780-699-5082 or DLMS Purebred Team 780.991-3025**

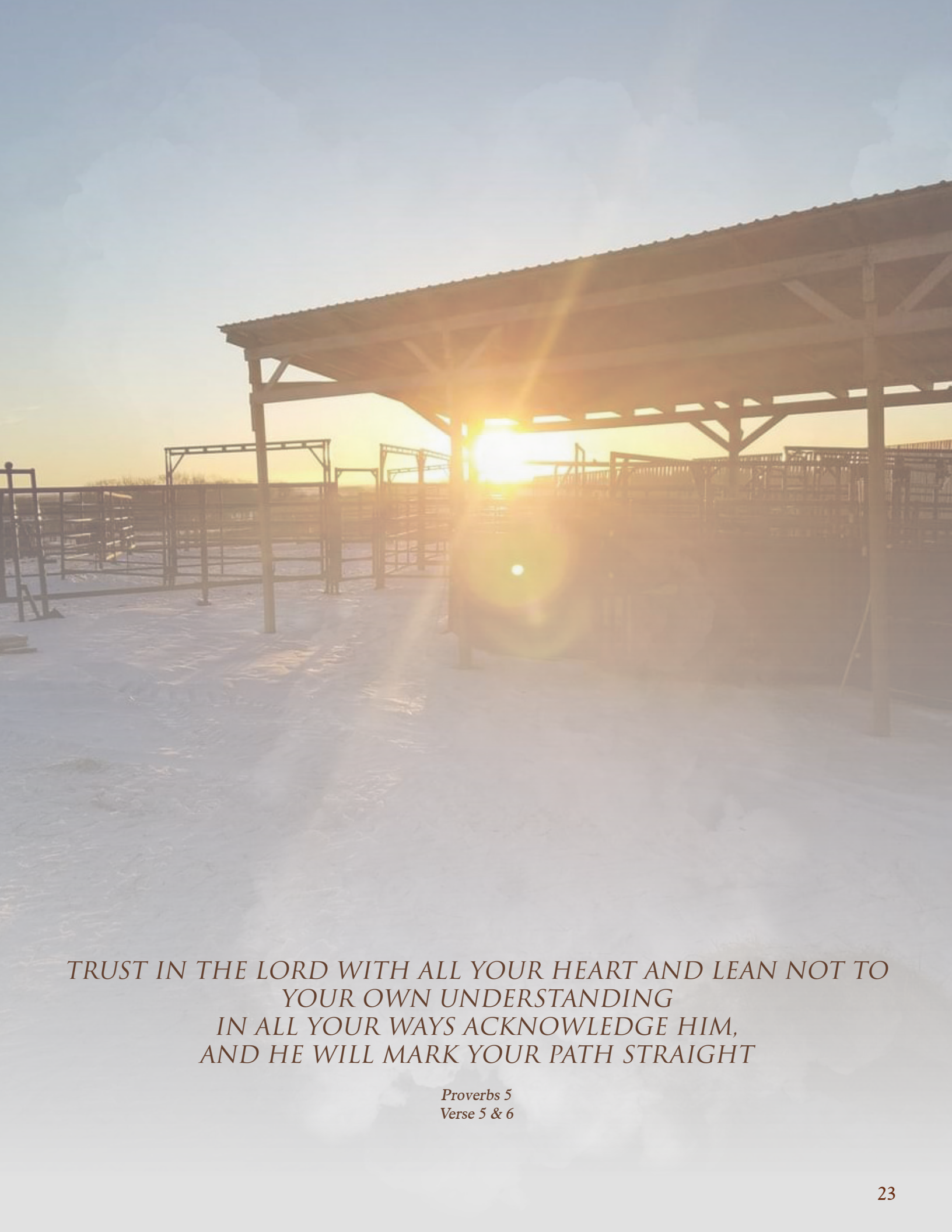
Direct Livestock Marketing Systems  
We're Making the Connection

**DLMS**  
[www.dlms.ca](http://www.dlms.ca)

*To find an agent or sale near you today*  
*visit [www.dlms.ca](http://www.dlms.ca)*

**Purebred Sales • Daily Presort Sales**  
**Direct Off-farm Sales every Thursdays at 10:00 am**





TRUST IN THE LORD WITH ALL YOUR HEART AND LEAN NOT TO  
YOUR OWN UNDERSTANDING  
IN ALL YOUR WAYS ACKNOWLEDGE HIM,  
AND HE WILL MARK YOUR PATH STRAIGHT

*Proverbs 5  
Verse 5 & 6*



*Notes:*



# Terms & Conditions

**TERMS:** The terms of the sale are cash or cheque, payable at par at the sale location. The right of property shall not pass until after settlement has been made; no invoicing on buyers in attendance unless previous arrangements have been made. Every animal sells to the highest bidder and in cases of disputes, the auctioneer's decision will be final.

Announcements made from the auction block will take precedence over the printed matter in the catalogue. Current exchange rates will be announced sale day. All monies are in Canadian funds.

**CERTIFICATE OF REGISTRATION:** Each animal will carry papers issued by the Canadian Angus Association. A certificate of registry duly transferred will be furnished to the buyer for each animal after payment has been made.

**VOLUME DISCOUNTS:** 5 bulls or more 5%, 10 bulls or more 10%.

**GENOMIC ENHANCED EPD'S:** All registered sale lots have genomic enhanced EPDs by the Angus GS test and have their sire verified. *Note: Because of weather DNA was delayed in transit and results will be available after April 1st.*

**GUARANTEE:** All cattle sell under the standard terms and conditions of the Canadian Angus Association. **All bulls are fully guaranteed against injury or death by Bar-H Land & Cattle Co for the first breeding season. We ask that you contact us as soon as possible regarding any claims. All claims must be made by October 1, 2023.**

**DELIVERY:** Bar-H Land & Cattle Co offer free delivery on all cattle to central points. Any cattle selling to the US will be taken to the nearest port of entry. **Bulls picked up within 1 week of the sale will be eligible for a \$50.00 discount.**

**HEALTH:** All animals in the sale have met all necessary health requirements.

**INSURANCE:** We strongly recommend that insurance is purchased for full value.

**LIABILITIES:** All persons attend the sale at their own risk. The seller, facility owner and sale manager assume no liability legal or otherwise, for any accidents that occur. It is understood that T Bar C Cattle Co. (2013) Ltd. is acting only as a medium between buyer and seller and is not responsible for any failure on the part of either party to live up to his obligations. Neither does T Bar C Cattle Co. (2013) Ltd. assume any financial obligations to collect or enforce collection of any monies between parties and any legal action that may in exceptional cases be taken must be between the buyer and the seller. T Bar C Cattle Co. (2013) Ltd. assumes no responsibility for any credit extended by the seller to the buyer. The buyer must look to the seller for fulfillment of all guarantees and representations made hereunder.

**PHONE, MAIL & WIRE BIDS:** Bidders unable to attend the sale may phone, wire or mail their bids and instructions to the sale manager, auctioneer or special representatives. Bids must be received in sufficient time prior to the sale.

**ERRORS:** All announcements at sale time, written or oral, supersede any written material in the catalogue.



Return Undeliverable  
Canadian Addresses To:  
T Bar C Cattle Co. Ltd.  
Box 2330  
Warman, Saskatchewan S0K 4S0



*Annual*  
**ANGUS**  
*Bull & Female*  
**SALE**

*Today's*  
Publishing